

# AUTOMATIC POOL FILLER INSTALLATION MANUAL

## Model # T40-F

### Installation Instructions

***Prior to installation, check local building codes for exceptions to these instructions.***

1. Install leveler bucket so top of bucket is flush with bond beam of pool (See Fig. A). Ring and Lid then should be installed flush with deck. Use rebar mounting flanges provided on bucket to insure and aid in keeping bucket level during concrete pour.
2. Install 1½" equalizer pipe. **IMPORTANT: Equalizer pipe must be straight, as shown in Figure A. The use of any 45° or 90° pipe could cause air lock and void warranty. Use only PVC to ABS joint cement for this application.**
3. Connect ¾" fresh water supply pipe to side leveler bucket. (See Fig. A). **Special Note: Please allow adequate cure time as per cement manufacturer before applying pressure.**
4. You can pressure test auto-fill with supplied fitting P/N 210067. (See Fig. D). **CAUTION: Do not over tighten.**
5. Remove test plug and flush supply line for approximately 60 seconds or until all debris has cleared.
6. Connect ¾" overflow pipe in port (See Fig. A), using a PVC to ABS joint cement.
7. Install valve assembly, Fluidmaster® valve. **IMPORTANT: Do not use liquid or paste sealers. Pentair Water Pool and Spa, Inc. does not cover warranty if damaged because of over tightening or cross threading.**
8. To adjust float height of Fluidmaster® valve, lightly press down the top of fill valve with one hand, while turning clockwise or counter-clockwise to adjust valve. Continue turning until water level is achieved. (See Figure E).



### Rainbow Pool Products

PO Box 2388, Mansfield Qld 4122

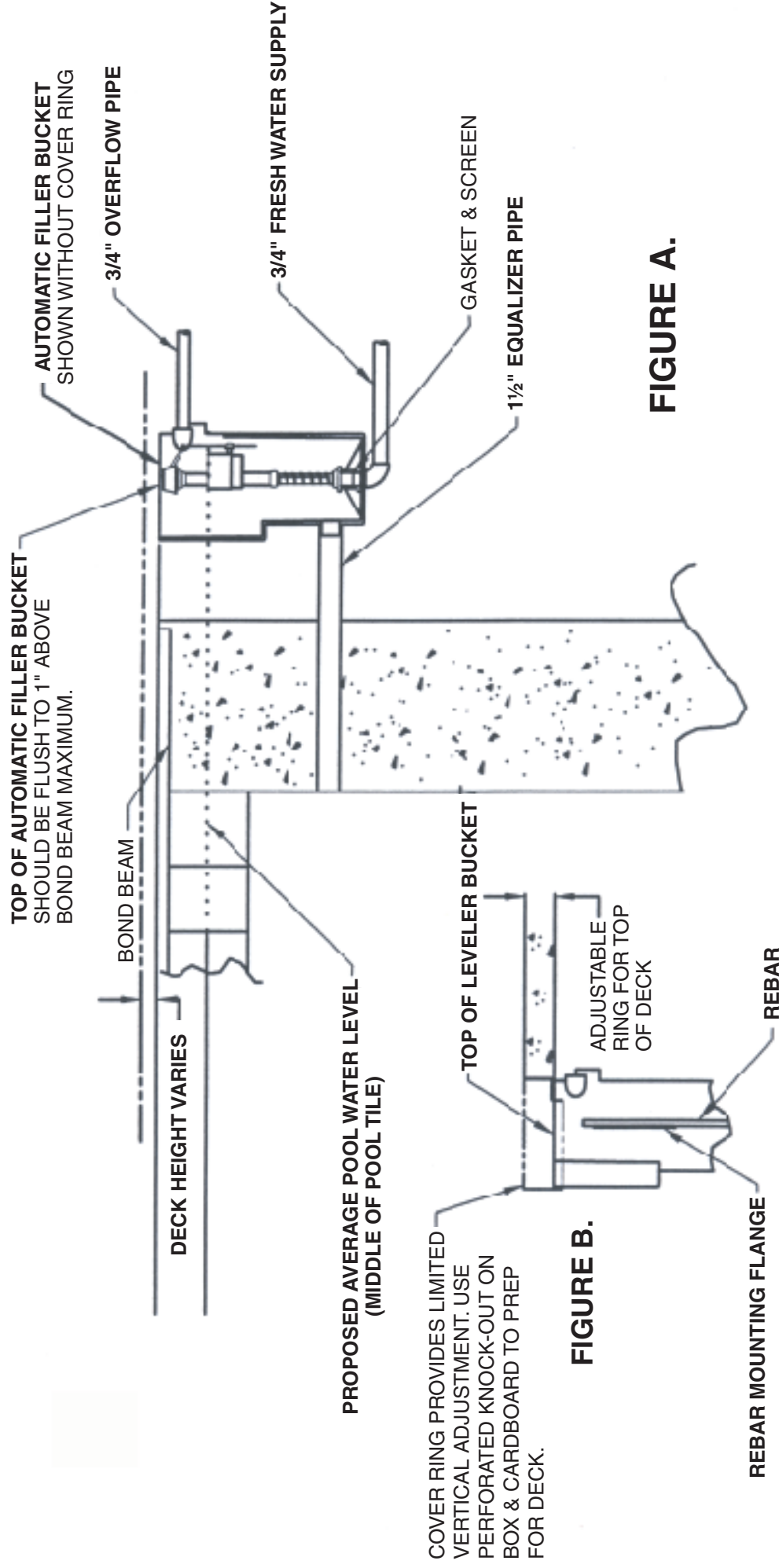
Telephone STD 61-7-3849 5385

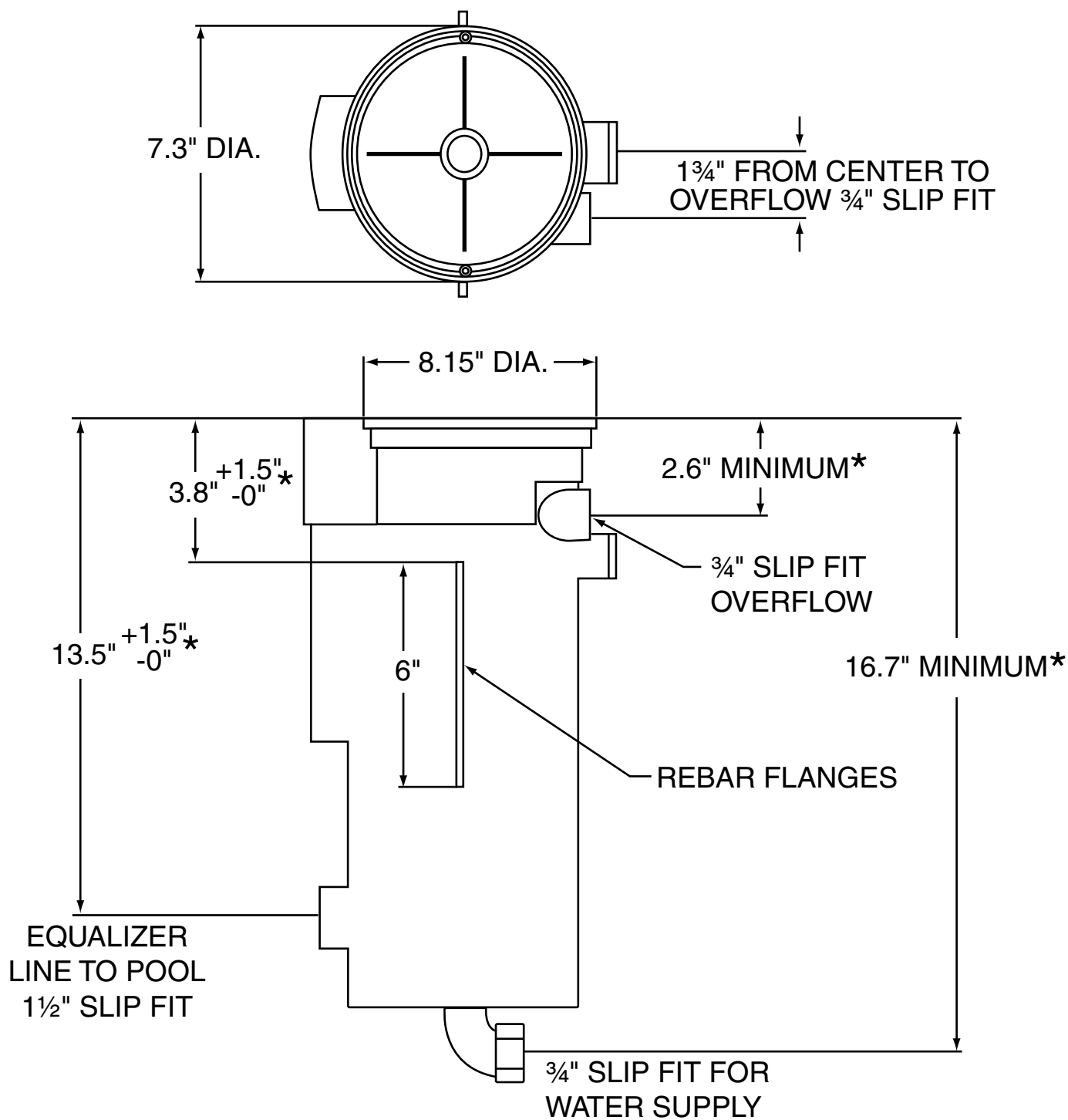
Facsimile STD 61-7-3849 5384

Email: [info@rainbowpoolproducts.com.au](mailto:info@rainbowpoolproducts.com.au)

Web: [www.rainbowpoolproducts.com.au](http://www.rainbowpoolproducts.com.au)

# AUTOMATIC POOL FILLER INSTALLATION GUIDES Model # T40-F

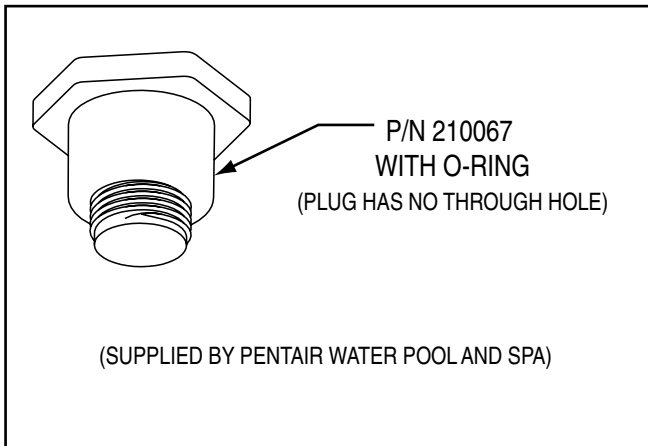




**FIGURE C.**

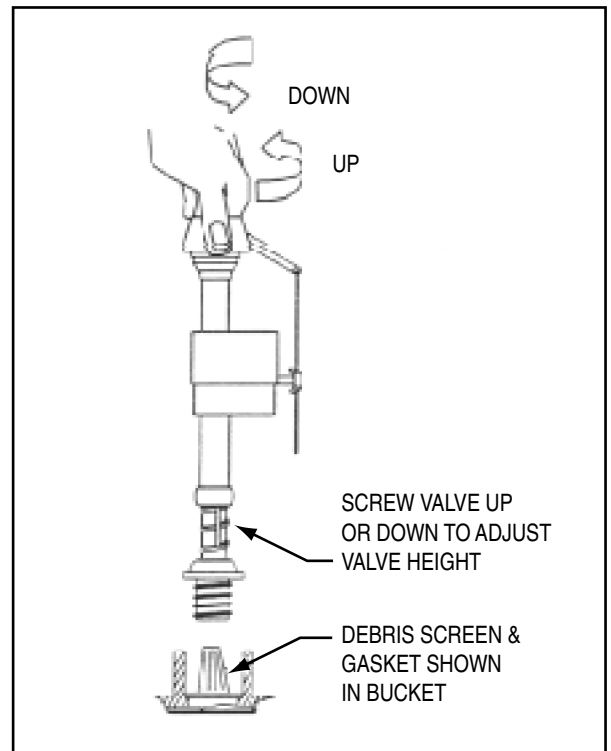
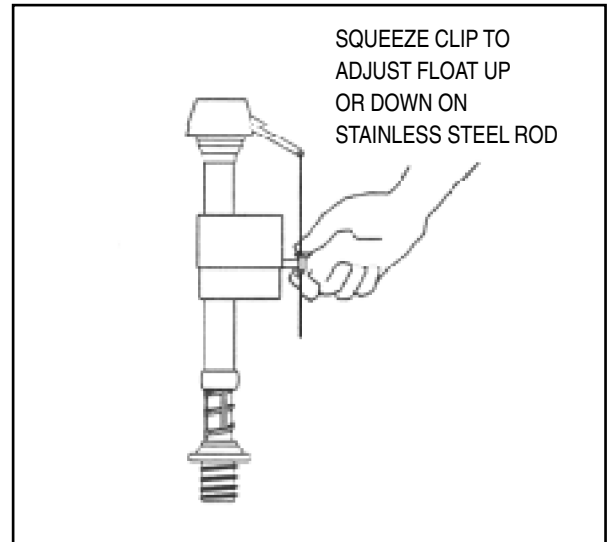
\* REFER TO FIGURE A OF INSTALLATION INSTRUCTIONS FOR HEIGHT OF DECK CONSIDERATIONS.

## TEST PLUG



**CAUTION: DO NOT OVER-TIGHTEN!**

**(FIGURE D.)**



TO CLEAR SAND AND DEBRIS FROM SUPPLY LINE,  
REMOVE DEBRIS SCREEN, AND CLEAN SCREEN.  
THEN REINSTALL SCREEN AND VALVE.

**(FIGURE E.)**

## Pentair Water Pool and Spa, Inc.

1620 Hawkins Avenue ♦ Sanford, NC 27330 ♦ (919) 566-8000

10951 W. Los Angeles Avenue ♦ Moorpark, CA 93021 ♦ (805) 553-5000



© 2006 Pentair Water Pool and Spa, Inc. All rights reserved.

**This document is subject to change without notice.**

**Trademarks and Disclaimers:** The Pentair Pool Products logo is a registered trademark of Pentair Water Pool and Spa, Inc. Other trademarks and trade names may be used in this document to refer to either the entities claiming the marks and names of their products. Pentair Water Pool and Spa, Inc. disclaims any proprietary interest in trademarks and trade names other than its own.

P/N YYLEV F

Rev. B 6-26-06