

RAINBOW

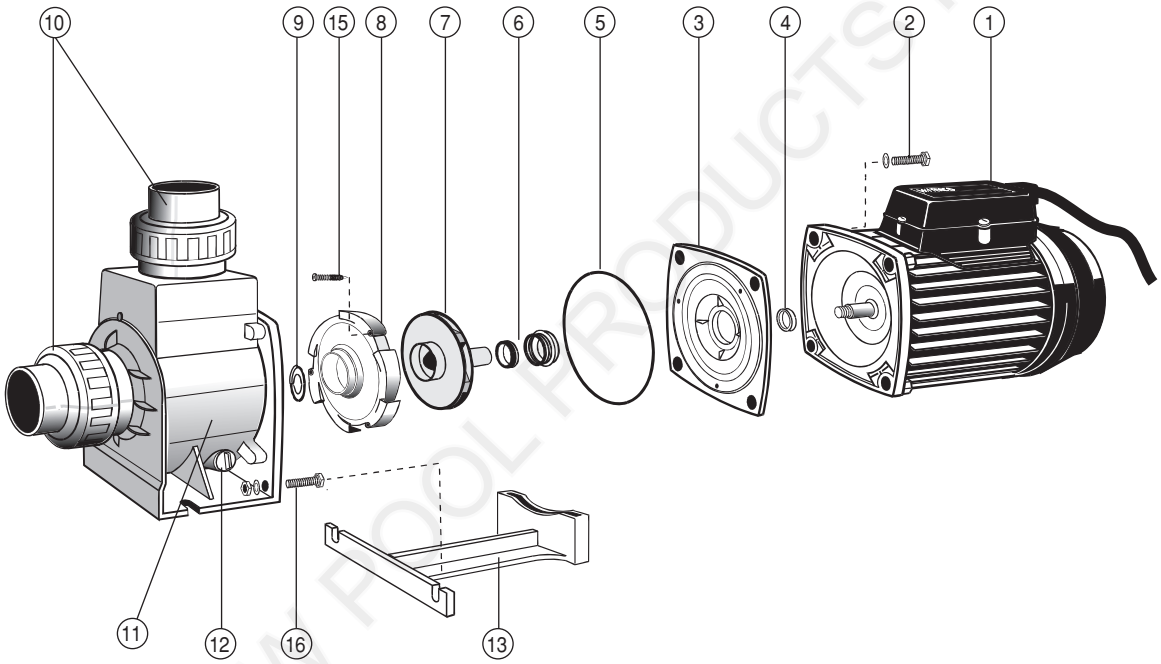
POOL PRODUCTS



Quality Pool & Spa Products

SUPAFLO

SPARE PARTS DIAGRAM



Key	Description	Product Code
1	Motor 1.68kW No Slinger Required (150-200)	635035L
1	Motor 2.16kW No Slinger Required (250)	635036L
1	Motor 2.24kW Single Phase C/W Slinger (300, 350)	635038E
2	Supatuf Multi Pack M10 Bolts & Washers 4 x 6340181 (M10 x 30 bolt) 4 x 6302181 (M10 washer)	63401813
3	Adapter Plate	635021
4	Motor Slinger (suit 635038E)	631782
5	Pump Body O ring	635028
6	Mechanical Seal	6340162
7	Impeller (Supaflo 150)	635012
7	Impeller (Supaflo 200)	635013
7	Impeller (Supaflo 250)	6350230
7	Impeller (Supaflo 300)	6350160
7	Impeller (Supaflo 350)	6350180
8	Diffuser (Supaflo 150, 200)	635017
8	Diffuser (Supaflo 250, 300, 350)	635022
9	Diffuser Gasket (Supaflo 150, 200, 250)	634011
9	Diffuser Gasket (Supaflo 300, 350)	6340113
10	65/50mm Half Union	63406550BLK
11	Pump Body (Supaflo 150, 200)	63501941
11	Pump Body (Supaflo 250, 300, 350)	63501961
12	Drain Plug	634023
13	Pump Foot	6340223
15	Diffuser Screw (set of 4)	63400834
16	Supatuf Multi Pack M6 Bolts & Washers 2 x 6340060 (M6 nut) 2 x 6340030 (M6 washer) 2 x 63400410 (M6 x 25 bolt)	6340020
n/s	Impeller Retaining Screw (Supaflo 250-350)	634041
n/s	Fibre Washer (Supaflo 250-350)	644772
	Adaptor Kit For Supatuf / Supaflo (75-200)	6350212
6 & 13	63502140 - Square Bracket Kit (S/T 75-200 Mkl) S1290816 - Screw M3x30mm Pan Head SS (each, 3 required)	
6		
20	6340165 - Flange Protector Kit	
21	63400833 - Screw #4x3/8" Pan Head SS (each, 2 required)	
6	6340162 - Mechanical Seal SS 316	
	Adaptor Kit for Supatuf / Supaflo (250-350)	63502151
6 & 13	63502141 - Square Bracket Kit (S/T 250-350 Mkl) 63400835 - Screw M3x45 SS 304 Pan Head (each, 3 required)	
6		
20	6340165 - Flange Protector Kit	
21	63400833 - Screw #4 3/8" Pan Head SS (each, 2 required)	
10	6340162 - Mechanical Seal SS 316	