

CRISTAL-FLO™ HIGH-RATE SAND FILTERS

REPLACEMENT PARTS



Rainbow Pool Products

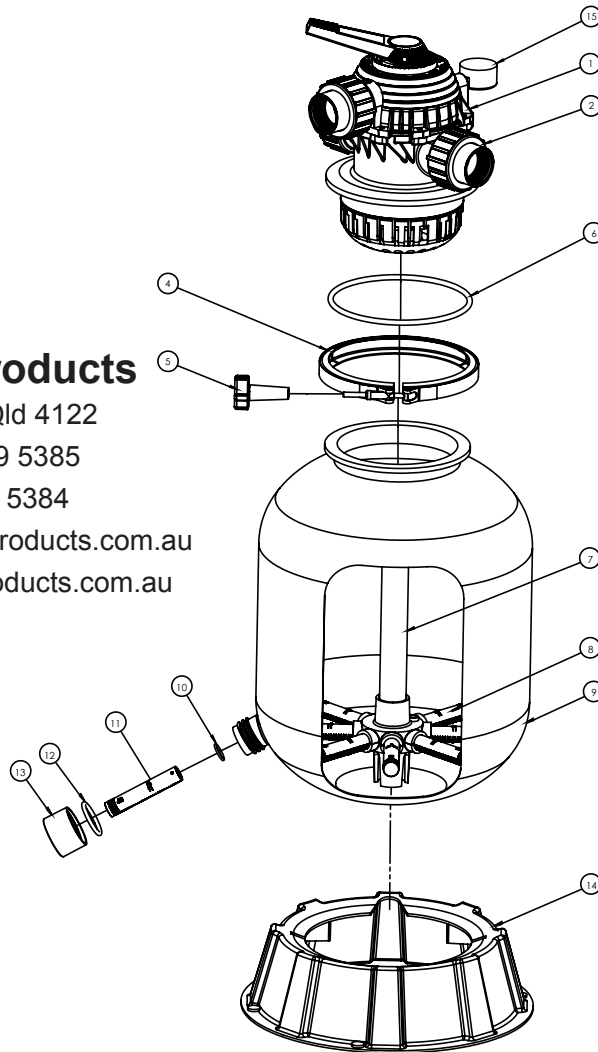
PO Box 2388, Mansfield Qld 4122

Telephone STD 61-7-3849 5385

Facsimile STD 61-7-3849 5384

Email: info@rainbowpoolproducts.com.au

Web: www.rainbowpoolproducts.com.au



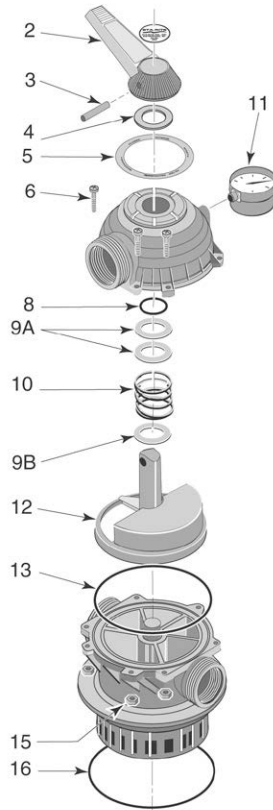
Item	Description	CFII-TP150	CFII-TP170	CFII-TP200	CFII-TP240	CFII-TP300
CRISTAL-FLO HIGH-RATE SAND FILTERS						
1	Multi-Port Valve	SR14965-A003	SR14965-A003	SR14965-A003	SR14965-A003	SR14971-TM-22-L
2	Barrel Union Kit	14965-A033 (includes 3 pieces)				700735 (3 req.)
4	Clamp	24201-0103	24201-0103	24201-0103	24201-0103	24201-0103
5	Knob Clamp	WC36-22	WC36-22	WC36-22	WC36-22	WC36-22
6	O-Ring Tank Flange	702223	702223	702223	702223	702223
7	Stem Pipe & Hub	24201-0040 (Hub Only - Use 40mm PVC Pipe for Stem Pipe)				R24205MSS8
8	Lateral (8 req.)	24600-0003	24600-0003	24600-0003	24700-0075	R303004
9	Tank Body					Not Available as Spare
10	O-Ring Lateral					Not Used in Australia
11	Drain Lateral					Not Used in Australia
12	O-Ring Drain Cap	6247140	6247140	6247140	6247140	6247140
13	Drain Cap	14965-0025	14965-0025	14965-0025	14965-0025	14965-0025
14	Base	G-BASE-UNI1B	G-BASE-UNI1B	G-BASE-UNI1B	G-BASE-UNI1B	R239000105A
15	Pressure Gauge	5166700	5166700	5166700	5166700	5166700

MULTIPOINT 1-1/2 IN. VALVE (SR14965-A003)

REPLACEMENT PARTS FOR PANTERA AND CRISTALFLO MPV'S

USED ON MODELS:

P221100
P225100
CFII-TP150-40
CFII-TP170-40
CFII-TP200-40
CFII-TP240-40



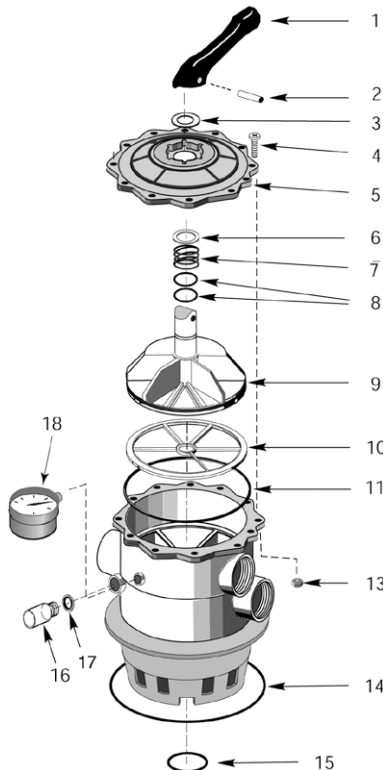
Item	Part No.	Description
MULTIPOINT 1-1/2 IN. VALVE		
2	14962-0032	Handle
3	35857-0021	Dowel Pin
4	14962-0005	Washer
5	14965-0020	Decal
6	37337-3056	Screw
7	14965-0011S	Valve Cover
8	702259	O-Ring
9A	14965-0007	Washer
9B	14965-0007	Washer
10	14965-0006	Spring
11	5166700	Gauge, Pressure
12	14965-0028	Plug and Gasket Assembly
13	702206K	O-Ring, Cover
15	14965-0013	Valve Body Assembly
16	702223	O-Ring, Tank Flange
NOT SHOWN		
	24201-0103	Clamp Assembly

MULTIPOINT 2 IN. VALVES (SR14971-TM-22-L)

REPLACEMENT PARTS FOR PANTERA AND CRISTALFLO MPV'S

USED ON MODELS:

P229200
P233200
CFII-TP300-50



Item	Part No.	Description
MULTIPOINT 2 IN. VALVE		
1	14971-SM10E1	Handle (ABS)
2	14971-SM10E2	Pin (S.S. 304)
3	14971-SM10E3	Washer
4	14971-SM10E4	Screw (S.S. 304)
5	14971-SM20E6	Valve Cover (ABS)
6	14971-SM10E8	Washer
7	14971-SM10E9	Spring (S.S. 304)
8	14971-SM10E10	O-Ring (Mitrile)
9	14971-SM20E11	Plug & Gasket Assembly
10	See 9	Gasket (Kratom)
11	14971-SM20E7	O-Ring, Cover
13	14971-SM10E14	Nut, Hex (S.S. 304)
14	U9-369	O-Ring, Tank Flange
15	35505-1243	O-Ring, Stand Pipe
16	14971-SM10E17	Sight Glass
17	14971-SM10E16	Sight Glass, Gasket
18	15060-0000T	Gauge, Pressure