



Stainless Steel Grating



| Code | Description |
|------|-------------|
|------|-------------|

Stainless Steel Grating

| | |
|-------|--|
| 32415 | Stainless Steel longitudinal grille 195 mm |
| 32416 | Stainless Steel longitudinal grille 245 mm |
| 32417 | Stainless Steel longitudinal grille 295 mm |
| 32418 | Stainless Steel longitudinal grille 345 mm |
| 32729 | Stainless Steel 90° corner 195 mm |
| 32730 | Stainless Steel 90° corner 245 mm |
| 32731 | Stainless Steel 90° corner 295 mm |
| 32732 | Stainless Steel 90° corner 345 mm |

SPECIFICATIONS

Stainless Steel Grating

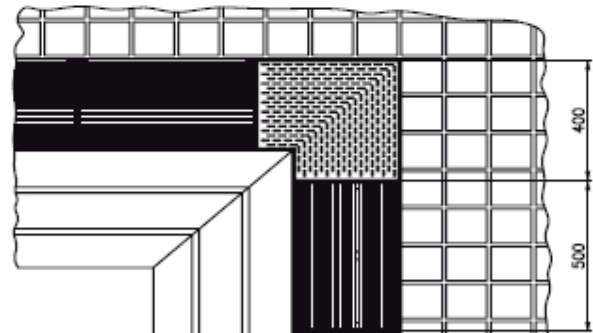
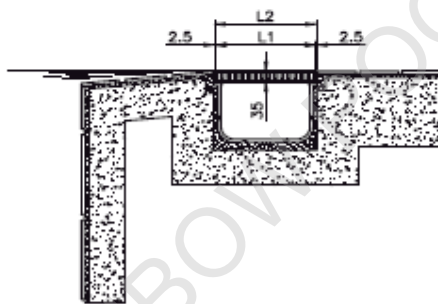
Longitudinal overflow grating, made in Stainless Steel. It is necessary to construct the channel 5mm wider than the grille itself, to allow for easy assembly.

It is made up of straight sections of AISI-304 Stainless Steel, 500 mm in length. Straight sections can be made-to-measure in order to fit the length of the swimming pool.

The 90° corner is made of Stainless Steel and is the perfect complement to the Stainless Steel longitudinal grating. Metal with non-slip surface. 4 models with different sizes according to the width of grating used.

| Product Code | Standard Packaging | Standard Weight kg |
|--------------|--------------------|--------------------|
|--------------|--------------------|--------------------|

- Stainless Steel longitudinal grille 195 mm **32415**
- Stainless Steel longitudinal grille 245 mm **32416**
- Stainless Steel longitudinal grille 295 mm **32417**
- Stainless Steel longitudinal grille 345 mm **32418**
- Stainless Steel 90° corner 195 mm **32729**
- Stainless Steel 90° corner 245 mm **32730**
- Stainless Steel 90° corner 295 mm **32731**
- Stainless Steel 90° corner 345 mm **32732**



| Grating code | Corner code | L1 | L2 |
|--------------|-------------|-----|-----|
| 32415 | 32729 | 195 | 200 |
| 32416 | 32730 | 245 | 250 |
| 32417 | 32731 | 295 | 300 |
| 32418 | 32732 | 345 | 350 |