

AQUA-QUIP SURFACE MOUNTED POOL LIGHT CONVERSIONS



Code	Description
APL036	Stroud C150 Conversion
APL046	Waterco Conversion
APL056	Spa Electrics Conversion
APL066	Swimworld Conversion
APL096	Poolrite Conversion
APL076	Filtrite Conversion
APL086	Stroud SM400 Conversion
APL021	Ronstan / Aqua-Quip Conversion
APL080	Aqua-Quip Conversion (1.5mm ²)
APL095	Aqua-Quip Conversion (4mm ²)

FEATURES

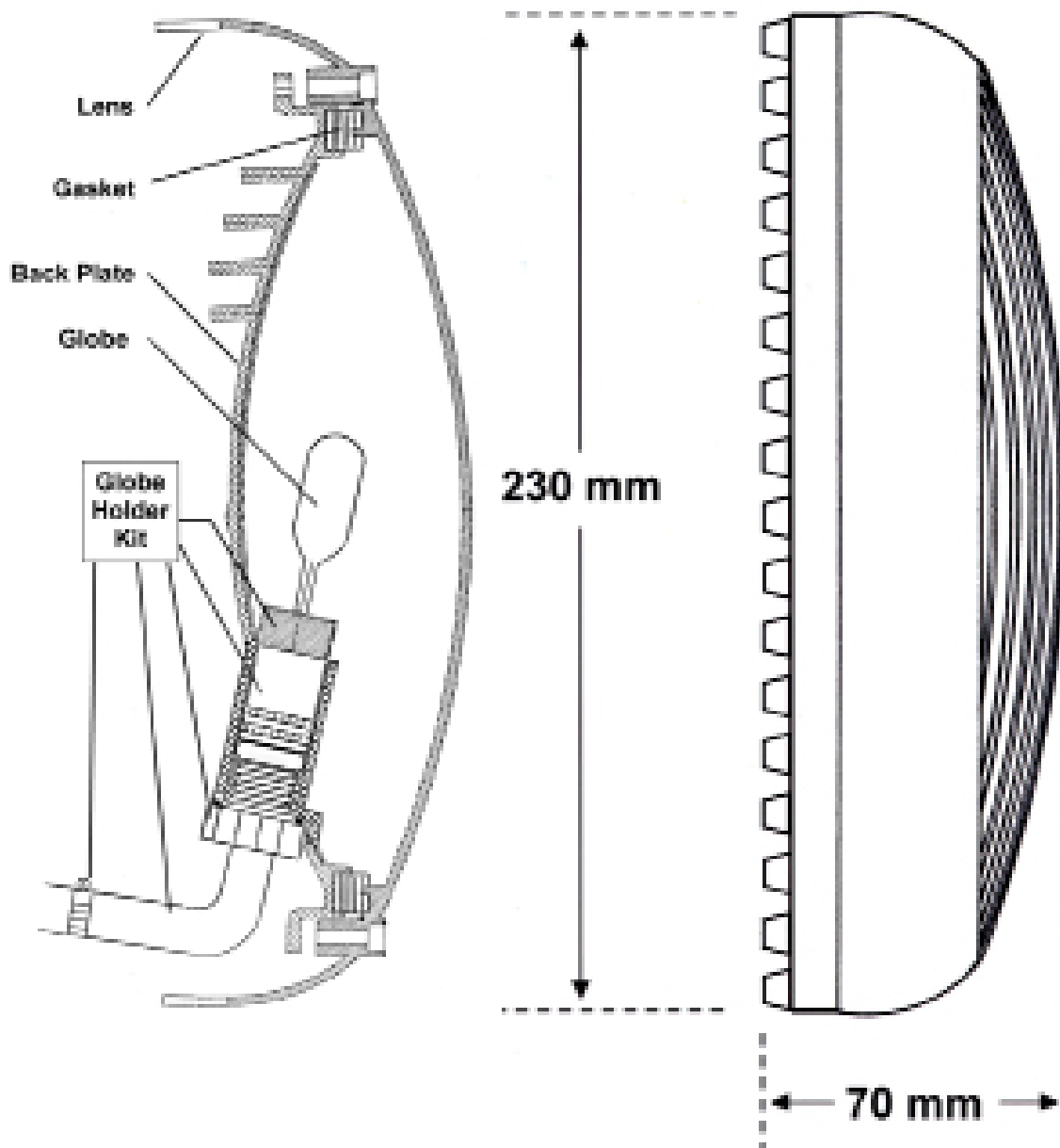
From the most simple to the extraordinary, lighting is often the most eye catching aspect of your pool and spa design. Aqua-Quip is synonymous with award winning pool builders, aiding with design challenges to best fulfil customers lighting expectations for that special evening atmosphere. Aqua-Quip surface mounted lights have been designed with a single-coloured combined lens and dress ring. This means that Aqua-Quip lights blend in to the colour of the pool interior, making them the lights you don't notice....until you turn them on!

- Quick change globe facility
- Patented air expansion chamber
- Large diameter moulded reflector
- Long life quartz halogen globe
- Tough one-piece Impact Modified Acrylic Lens
- Blue, Green, Clear, Pearl and Red lenses available
- Extra Low Voltage ensures safety
- Made to all relevant Australian Standards & Regulations

RAINBOW POOL PRODUCTS PTY LTD

GLOBE CHANGING INSTRUCTIONS

- 1) Ensure pool light is switched off.
- 2) Remove 3 phillips head screws which affix pool light to mounting bracket.
- 3) Pool light will float to surface - lift out of water onto pool deck for easy servicing.
- 4) Use multi grips to loosen the gland nut, pull globe holder assembly to expose the globe.
- 5) Remove old globe. Before inserting new globe, any excess condensation inside the pool light should be left to dry out. Using a dry cloth, wipe clean the internal of the barrel which houses the globe assembly.
- 6) Insert globe into the 2 holes of the ceramic lamp holder. If lamp holder is corroded then a new globe holder kit is required.
- 7) Insert globe holder assembly and tighten gland nut until a firm seal is established.
- 8) Wrap excess cable around hooks at rear of back plate before re-mounting the light onto the wall mounting bracket.



INSTALLATION & OPERATING INSTRUCTIONS

IMPORTANT!

Please read entire instruction booklet before installing pool light. If you are unsure about electricity or whether you can install this product properly, then please contact the place of purchase to organise an installer.



WARNING!

IF AN EXTRA LOW VOLTAGE TRANSFORMER IS NOT FITTED TO YOUR EXISTING POOL LIGHT, THEN THE LIGHT IS **240 VOLT**.

CONTACT A LICENSED ELECTRICIAN.

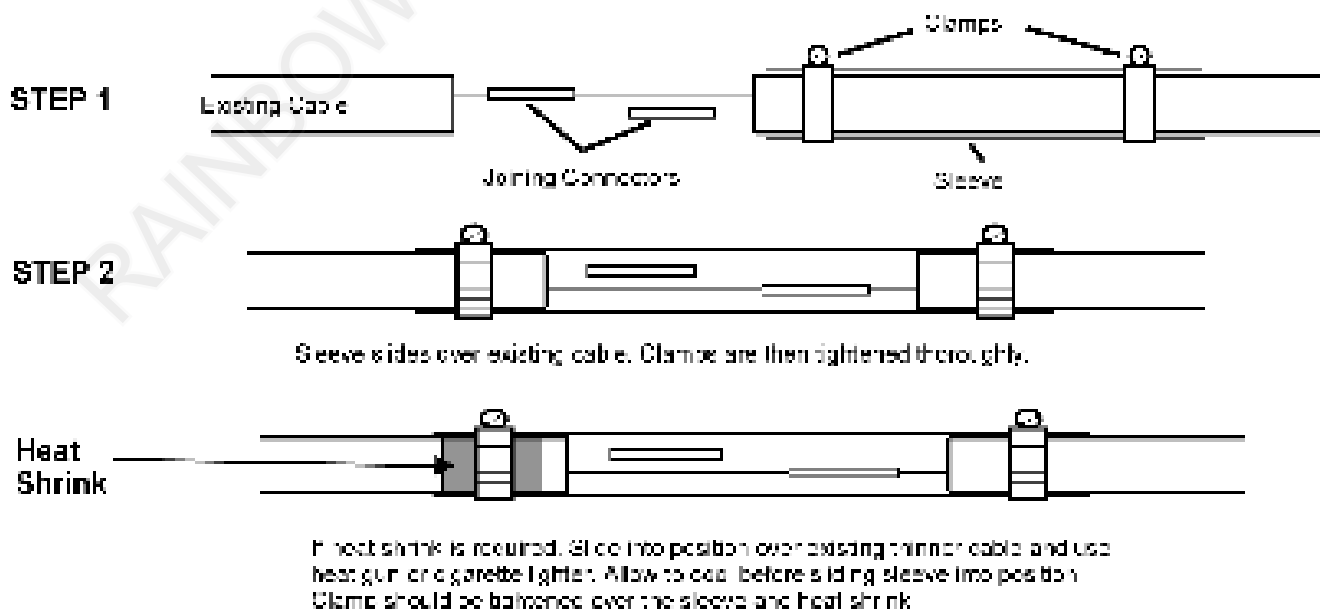
INSTALLATION INSTRUCTIONS

- 1) Ensure pool light is switched off.
- 2) Remove existing underwater pool light and mounting bracket from wall ring. Save screws for later use.
- 3) Cut the existing lead as close as possible to pool light.
- 4) Align the screw hole provisions as defined on opposite page and screws (saved in step 2) to mount the new bracket on top of the existing wall ring.

- 5) Wire the new Aqua-Quip light to existing cable as per wiring instructions and diagrams below.
 - a) Trim back outer cable sheath by 70mm on existing cable. Cut and bare back the two wires in a staggered fashion to accommodate the blue or yellow joining connectors attached to new pool light cable. If the existing cable is thinner than the new Aqua-Quip cable, please refer to instructions and diagram below on applying heat shrink, as heat shrink will need to be positioned before crimping the wires together.
 - b) Firmly crimp wires into blue or yellow joining connectors using crimping tool or suitable pliers. Any colour joined to any colour. If a green earth wire is present in the existing cable then cut it off.
 - c) Slide pre-lubricated grey or white sleeve from new cable over the join and over the existing cable so that it covers approx 25mm of the existing cable.
 - d) Guide stainless steel clamps into position (approx 15mm from either end of tubing) and tighten using a 1/4" nut driver or socket to ensure a leak-proof seal. Clamps need to be tightened as thoroughly as the clamp on the factory join. Otherwise, water will enter the pool light via the cable, voiding the warranty.
 - 6) Use three mounting screws provided to affix Aqua-Quip pool light onto the three mounting posts of the Aqua-Quip bracket. Mount the pool light with the cable entry at the bottom, wind up excess cable around the storage hooks at the rear of the light. The moulded lines on the front of the lens must run vertically.

Please Note:

- 1) Swimworld (new & old), Stroud SM400, Filtrite, Dega, Ronstan Hi-Lite and Aqua-Quip do not have an intermediate mounting bracket. The conversion light is mounted directly onto the wall ring which is usually rendered into the pool wall.
- 2) Cut the Swimworld (new) plastic mounting posts and lugs off flush with the pool wall prior to attaching the new multi-fit bracket.
- 3) Attaching the new Aqua-Quip Conversion light to the Dega or Swimworld (old) wall ring will result in the new light protruding out too far from the wall. Lower the pool water level, cut off the wall ring protrusions, drill holes in pool wall, use wall plugs and stainless steel screws to affix standard bracket.



Existing Pool Light	Voltage Prior to new regulations	Bracket Supplied	Heat Shrink	Screw Hole Provisions
Stroud C150	32v 150w	Standard	No	1, 2, 3, 4
Waterco	24v 150w	Standard	Yes	5, 6, 7, 8
Poolrite	24v 150w	Multi-Fit	Yes	1, 4, 5
Spa Electrics	24v 150w	Multi-Fit	Yes	2, 8 or 1, 7
Swimworld (New) (with plastic wall ring)	12v 100w	Multi-Fit	Yes	3, 6
Questa / Waterlinx / Magic Pool Products	12v 100w	Multi-Fit	Yes	1, 7
Stroud SM400	32v 150w	Standard Niche	No	Use locating bar and tighten wing nuts.
Filtrite	12v 100w	Standard Niche	No	use locating bar and tighten wing nuts.
Dega	24v 150w or 32v 150w	Standard	No	Lower water level, cut off steel protrusions, drill holes in pool wall and attach standard bracket.
Swimworld (Old) (with steel wall ring)	12v 100w	Standard	Yes	Lower water level, cut off steel protrusions, drill holes in pool wall and attach standard bracket.
Ronstan / Hi Lite Aqua-Quip	12v 100w or 24v 150w	No bracket supplied	No	Light screws directly onto existing bracket.
Purex	240v	Large Niche 280mm bracket	No	Lower water level, drill holes in bracket and pool wall to suit site conditions.
Swimcraft	240v	Large Niche 320mm bracket	No	Lower water level, drill holes in bracket and pool wall to suit site conditions.

STANDARD



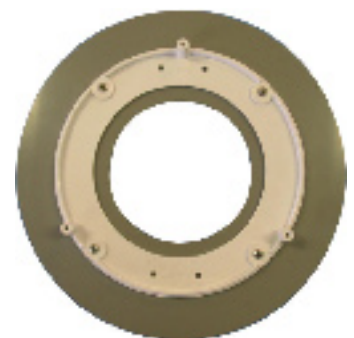
MULTI-FIT



STANDARD NICHE



LARGE NICHE



Aqua-Quip Pool Light Conversions allow you to substitute popular brands of surface mounted pool lights listed above with Aqua-Quip surface mounted pool lights.

Australian wiring regulations introduced in July, 2000 specify new pool lights sold should be not higher than 12v A.C or 30v ripple free D.C. Converting or repairing existing lights are not subject to these regulations.

Therefore, most pool light manufacturers made the change to 12v 100w from July 2000, so please ensure that the voltage of the supplied light as indicated above matches the voltage of the existing pool light and transformer.

Pool light conversions have been designed to suit concrete pools only.

Each conversion light is supplied with a 600mm length of cable with a joining kit at the end.

The cable and joining sleeve on the new Aqua-Quip light suit either 1.2mm² standard cable or 4mm² thick cable. The outer diameter of standard cable is approx 1.5mm, the outer diameter of the thick cable is approx 9.2mm.

The joining sleeves are colour-coded:
Grey = Standard Cable, White = Thick Cable.

Aqua-Quip supplies heat shrink on conversion lights where it is **likely** that the original cable is thinner than the cable on the new conversion light. **If the cable on the existing light is thinner, then heat shrink must be used to ensure a leak-proof seal.**

Clamps need to be tightened thoroughly using a 1/4" socket driver to achieve a leak-proof seal.

Brackets are available to convert old 240v lights. The pool level will need to be lowered and the bracket screwed to the pool wall. Ideally, a new cable should be installed by an electrician.

Aqua-Quip takes no responsibility for pool light conversions that are installed incorrectly or are connect to faulty cables or transformers.

Aqua-Quip Pool Light Conversions are warranted for 12 months from date of installation against faulty parts and workmanship. Globes are covered by a thirty day warranty. Warranty globes are posted to site.

IMPORTANT INFORMATION FOR INSTALLER AND POOL OWNER

- Pool light must be fully submerged before switching on, otherwise warranty will be voided.
- Always allow sufficient cable length behind pool light to enable future servicing.
- Only use the stainless steel screws provided, using inferior quality screws voids the warranty.
- Ensure mounting bracket is correctly mounted onto pool wall. The word "TOP" is moulded into the bracket. Pool light should then be mounted onto bracket so that the lines on the lens run vertically.
- Aqua-Quip recommends the use of pool lights at least two hours per week to prolong the life of the globe. This burns off any condensation that may build up in the pool light.
- Warranty will be voided if the stainless steel nut & bolt assemblies are tampered with.
- Never directly touch the globe with your fingers - always use plastic or foam material which is supplied with replacement globes. If the glass on the globe is touched, wipe clean with a cloth slightly moistened with methylated spirits.
- Be sure to use an Aqua-Quip replacement globe with the same voltage and wattage as the previous globe. If in doubt - check the label on the rear of the pool light or check the details on the transformer.