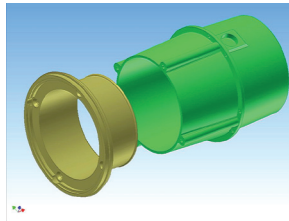




Quality Pool & Spa Products

AQUA-STAR HOUSING EXTENSIONS



Code	Description
ASL 051	Aqua-Star Dress Ring
ASL 076	Aqua-Star Dress Ring Extension

RAINBOW POOL PRODUCTS PTY LTD

INSTRUCTIONS

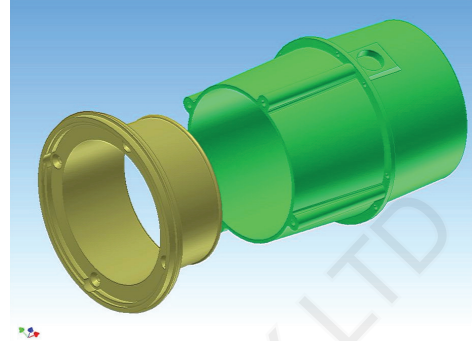
When Aqua-Star housings are recessed back behind the concrete wall, choose the appropriate option below to extend to your required length.

1) If Housing is up to 25mm behind concrete wall.

Description: Aqua-Star Dress Ring.

Code: ASL 051

Supplied as standard with every Aqua-Star light, this extension is still suitable if the front of the Aqua-Star Housing is behind the concrete by up to 25mm. It is a moulded product and features an eyeball lip for directional adjustment.



2) If Housing is between 25mm - 95mm behind concrete wall.

Description: Aqua-Star Dress Ring.

Code: ASL 051

If the front of the Aqua-Star Housing is behind the concrete wall by 25mm-95mm, then a further extension is available pre-assembled from Aqua-Quip. This fitting still allows some directional adjustment.



3) If Housing is more than 95mm behind concrete wall.

Scream out loud and curse the concreter.

Then call Rainbow Pool Products, we'll have a solution.