

AQUA QUIP SURFACE MOUNTED POOL LIGHTS

CODE DESCRIPTION

AQUA QUIP LIGHTS - HALOGEN

APL431	Pool Light	20 meter	12volt	Cable 4mm
APL451	Pool Light	30 meter	12volt	Cable 4mm
ULA003	Pool Light Protector - Stainless Steel			



Above lights available in Blue(432), Green(434), Clear(431) and Pearl(433)

AQUA QUIP LIGHTS - LED SURFACE MOUNTED QC LIGHTS COMPLETE WITH CABLE (for new pools)

LED001	LED Pool Light	20 meter	Blue LED (Fixed)
LED002	LED Pool Light	20 meter	White LED (Fixed)
LED003	LED Pool Light	20 meter	Green LED (Fixed)
LED004	LED Pool Light	20 meter	Multi-colour LED (Fixed)
LED031	LED Pool Light	30 meter	Blue LED (Fixed)
LED032	LED Pool Light	30 meter	White LED (Fixed)
LED033	LED Pool Light	30 meter	Green LED
LED034	LED Pool Light	30 meter	Multi-coloured LED

LED SURFACE MOUNTED QC RETRO-FIT POOL LIGHTS (for existing pools)

LED011	LED Retro Fit Light	Blue LED (Fixed)
LED012	LED Retro Fit Light	White LED (Fixed)
LED013	LED Retro Fit Light	Green LED (Fixed)
LED014	LED Retro Fit Light	White Multi-colour (Fixed)

LED SURFACE MOUNTED QC LIGHTS ONLY (no cable)

LED021	LED Surface Mounted Light	Blue LED
LED022	LED Surface Mounted Light	White LED
LED023	LED Surface Mounted Light	Green LED
LED024	LED Surface Mounted Light	Multi-colour LED

LED SURFACE MOUNTED QC CABLES ONLY

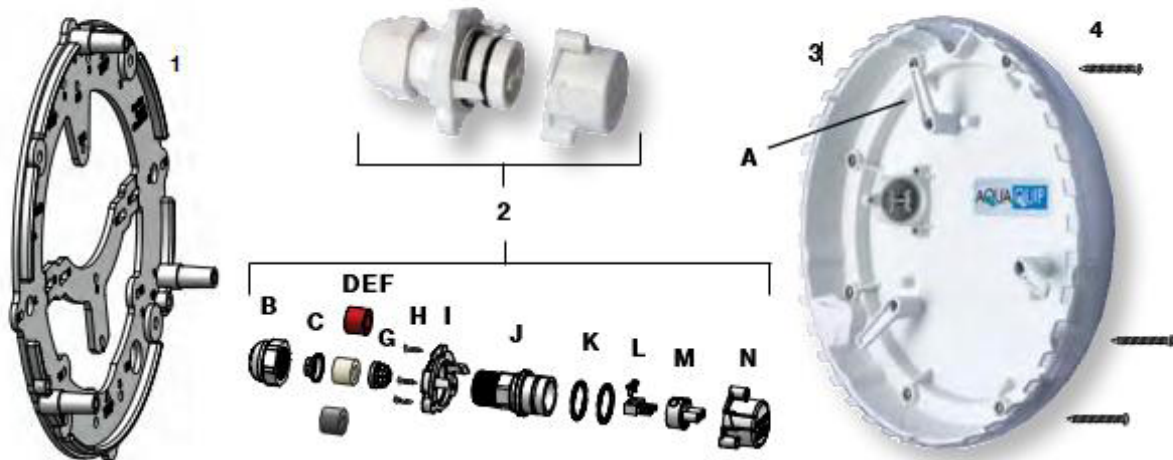
LED420	20 meter Cable with QC Plug Kit
LED430	30 meter Cable with QC Plug Kit

SPARE PARTS FOR QC SERIES SURFACE MOUNTED POOL LIGHTS

LED375	QC Series Quick Connect Plug Kit
APL050	Universal Mounting Bracket
APL075	Locating Bar Assembly for Filtrite and SM400
LED115	QC Extension Cable Joining Kit (1.5mm ² Cable)
LED120	QC Extension Cable Joining Kit (4mm ² Cable)
APL071	Retro-fit Screw Kit for Wall Mounting (Bracket to wall)
APL006	Screw Kit for Universal Mounting Bracket (Light to bracket)

AQUA QUIP SURFACE MOUNTED POOL LIGHTS

QC RETRO-FIT LIGHTS FOR EXISTING CONCRETE POOLS

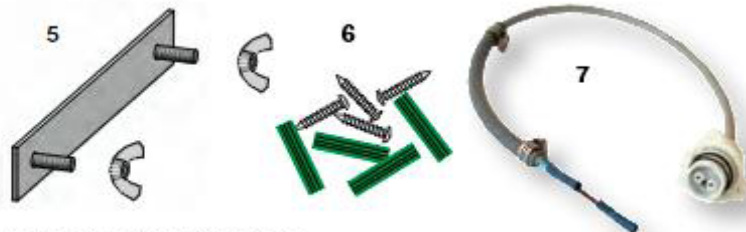


QC Retro-Fit LED Pool Lights are supplied with: **Universal Mounting Bracket (Item 1)** which has a variety of screw holes to ensure compatibility with all brands; **Quick Connect Plug Kit (Item 2)** allowing the light to be connected to the existing cable; **colour coded cable seals** of varying sizes enable the light to be connected to cables of varying thicknesses.

Light Only (Item 3) which is factory sealed and supplied with a clear lens with proprietary diffusion material ensures the vivid colours of the LEDs are projected and evenly dispersed throughout the pool.

If the existing cable is not long enough a choice of **Extension Cables (Item 7)** is available for purchase as an optional extra.

QC SERIES LED LIGHT PARTS LIST			
A	APL 802 Cable Hook	H	APL 806 Screw Kit for Cable Bracket
B	ASN 366 Cable Nut	I	APL 804 Cable Bracket
C	ASN 367 Washer	J	ASN 363 Connector Housing
D	ASN 370 Red Seal (suits .75mm ² - 1mm ² Cable)	K	ASN 380 O-ring Kit
E	ASN 371 White Seal (suits 1.5mm ² Cable)	L	ASN 611 Female Pin Kit
F	ASN 372 Black Seal (suits 2.5mm ² - 4mm ² Cable)	M	ASN 362 Female Plug
G	ASN 365 Cable Clamp	N	APL 803 Cable Cap



Items 5, 6 and 7 are optional extras.

QC LIGHTS FOR NEW POOLS



QC Series LED Lights for new concrete pools are provided with the **Universal Mounting Bracket (1)** which is screwed or rendered to the pool wall. The Cable is supplied with a protective **Cable Cap** which allows the Light Only to be connected once the pool is ready to be filled. Although the lights are capable of operating at varying voltages, only use 12 Volt AC transformers for new pool construction to comply with Australian Standards (AS/NZS 3000:2007).

TRANSFORMERS



CODE	DESCRIPTION				
APL502	Transformer	12volt	100VA	Suit 2 LED Light	Hardwired
APL504	Transformer	12volt	200VA	Suit 4 LED Light	Hardwired
APL511	Transformer	12volt	1 x 50VA Outputs		Plug In
APL512	Transformer	12volt	2 x 50VA Outputs		Plug In
APL514	Transformer	12volt	4 x 50VA Outputs		Plug In
LV25-12	Transformer	12volt	35VA	Suit 1 LED Light	Plug In
LV50-12	Transformer	12volt	50VA	Suit 2 LED Light	Plug In
LV100-12	Transformer	12volt	100VA		Plug In
LV200-12	Transformer	12volt	200VA		Plug In
SE22	Transformer	24volt	150VA		Plug In

AQUA QUIP SURFACE MOUNTED POOL LIGHTS SPARE PARTS

CODE DESCRIPTION

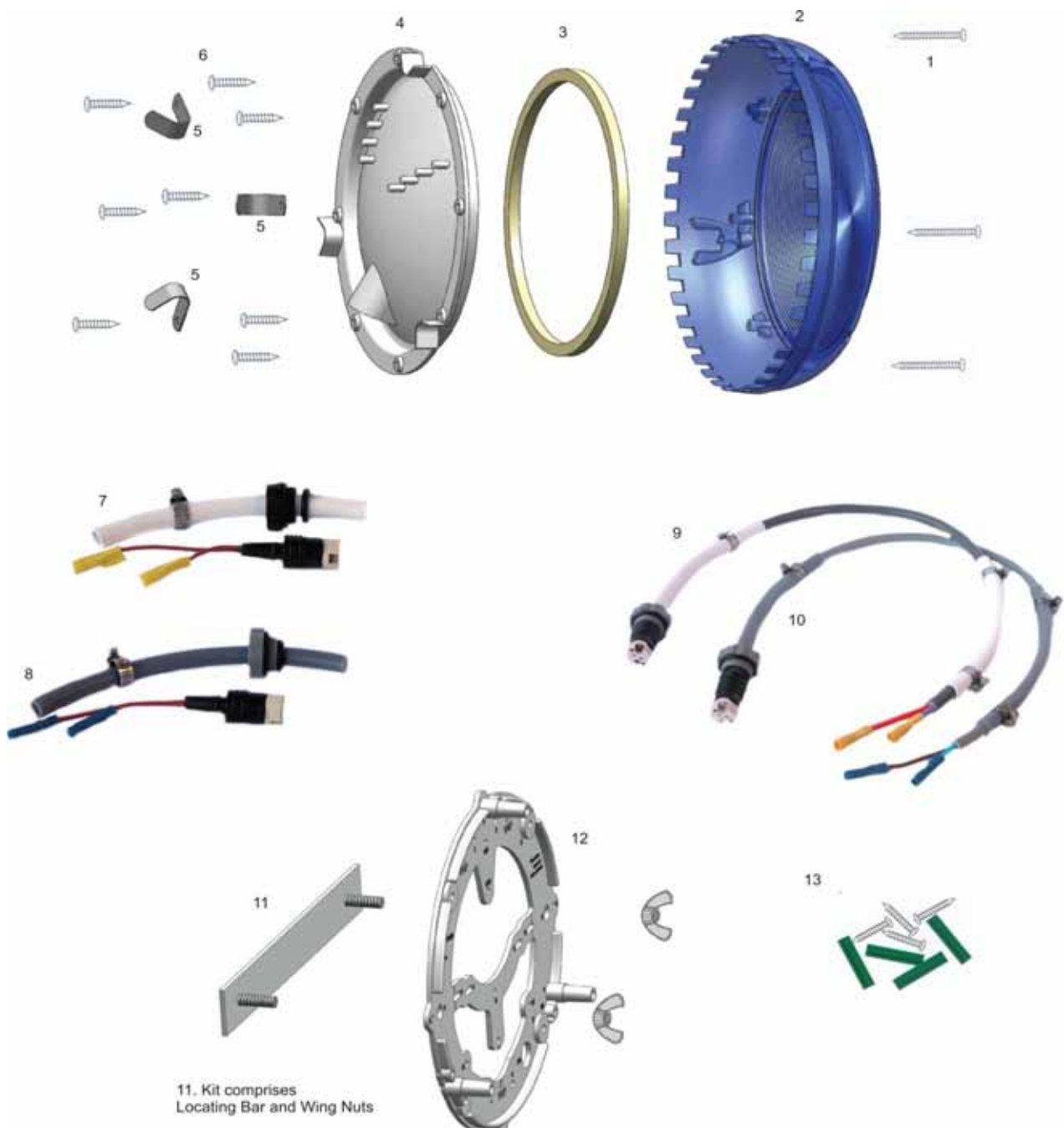
SUIT STAINLESS STEEL and MOULDED BACK PLATE			Part No.
APL006	Screw Kit for mounting bracket	PE-6	1
APL593	New Style Screw Kit for Lens		
APL028	Lens Gasket	PN 3863	3
APL025	Lens - Clear	PN 1358	2
APL022	Lens - Blue	PN 1355	2
APL023	Lens - Green	PN 1356	2
APL053	Lens - Pearl	PN 1359	2
APL026	Lens - Red	PN 1360	2
APL050	Mounting Bracket AquaQuip	PN 1361	12
APL075	Locating Bar Assembly suit Filtrite & SM400		11
APL045	Mounting Kit Vinyl and Fibreglass		
APL071	Screw Kit Retro fit for wall mounting		13
SUIT STAINLESS STEEL BACK PLATE			
APL009	Globe Holder Kit suits standard 1.5mm cable	SPE-9	8
APL051	Lead - Conversion Light (incl. SPE-9)		10
APL007	Screw Kit for lens assembly	SPE-7	
WHITE MOULDED BACK PLATE			
APL073	Globe Holder Kit	PPE-9	8
APL492	Lead - Conversion Light (Incl. SPE-9)		10
APL493	Screw Kit for lens assembly	SPE-7	
APL593	PT16 Screw Kit New Syle		6
APL200	Moulded Back Plate		4
APL490	Globe Holder Kit (4mm Cable)	4PPE-9	7
APL491	Lead - Conversion Light (Incl. 4PPE-9)		9
APL169	Cable Storage Hook for back plate		5
APL555	Nut Drive 1/4" AF		

AQUA QUIP SURFACE MOUNTED POOL LIGHTS SPARE PARTS

GLOBES - HALOGEN BI-PIN FOR SURFACE MOUNTED LIGHTS

ULG02	Underwater Globe	12V, 100W	Bi-Pin
ULG03	Underwater Globe	24V, 150W	Bi-Pin
ULG04	Underwater Globe	32V, 150W	Bi-Pin
ULG05	Underwater Globe	32V, 100W	Bi-Pin
ULG06	Underwater Globe	24V, 100W	Bi-Pin
ULG01	Underwater Globe	32V, 150W	Screw Type

AQUA QUIP SURFACE MOUNTED POOL LIGHTS SPARE PARTS



AQUA QUIP RETRO-FIT HALOGEN LIGHT KITS

Aqua Quip Retro-Fit Halogen Light Kits allow you to substitute the following brands with Aqua-Quip surface mounted pool lights. Full installation instructions are supplied with each pool light. Simply: Cut the cable of the old pool light, screw the Aqua Quip conversion bracket on top of existing wall ring, join the Aqua Quip light to the existing cable using the supplied crimping lugs, tube and clamps and then screw the new light to the bracket. Carefully identify the existing brand of pool light and the required voltage and wattage before ordering. **Please specify a colour: Blue, Clear, Green, Pearl or Red.**

CODE DESCRIPTION

Halogen Surface Mounted Retro-Fit Lights 12V, 100W - 1.5mm² CABLE

APL701	Clear	POOL LIGHT AND UNIVERSAL BRACKET - suits Swimworld. Also suits the following brands manufactured after July, 2000: Spa Electrics, Waterco, Poolrite, Aqua-Quip, Chameleon, Autumn Solar, Magic Pool
APL702	Blue	
APL703	Pearl	
APL704	Green	

Halogen Surface Mounted Retro-Fit Lights 24V, 150W - 1.5mm² CABLE

APL711	Clear	POOL LIGHT AND UNIVERSAL BRACKET - suits the following brands manufactured prior to July, 2000: Spa Electrics, Waterco, Poolrite, Aqua-Quip.
APL712	Blue	
APL713	Pearl	
APL714	Green	

Halogen Surface Mounted Retro-Fit Lights 32V, 150W - 1.5mm² CABLE

APL721	Clear	POOL LIGHT AND UNIVERSAL BRACKET - suits Stroud Compact 150
APL722	Blue	
APL723	Pearl	
APL724	Green	

Halogen Surface Mounted Retro-Fit Lights 12V, 100W - 4mm² CABLE

APL731	Clear	POOL LIGHT AND UNIVERSAL BRACKET - suits Filtrite. Also suits Aqua-Quip, Manufactured after July 2000.
APL732	Blue	
APL733	Pearl	
APL734	Green	

Halogen Surface Mounted Retro-Fit Lights 32V, 150W - 4mm² CABLE

APL741	Clear	POOL LIGHT AND UNIVERSAL BRACKET - suits Stroud SM400.
APL742	Blue	
APL743	Pearl	
APL744	Green	

Australian wiring regulations introduced in July, 2000 specify new pool lights sold should not be higher than 12V A.C. or 30V ripple free D.C. converting or repairing existing lights are not subject to these regulations. Always check the voltage/wattage of the existing pool light before ordering, otherwise product will be supplied as per the specifications above.

Pool light conversions have been designed to suit concrete pools only. Each conversion light is supplied with a 600mm length cable with a joining kit at the end. The cable and sleeve suit either 1.5mm² standard cable or 4mm² thick cable. The outer diameter of

standard cable is approx. 7.5mm, the outer diameter of the thick cable is approx. 9.2mm. The sleeves are colour coded: Grey = Standard cable White = Thick cable

Aqua Quip supply heat shrink on conversion lights where it is likely that the original cable is thinner than the cable on the conversion light. This heat shrink must be used to ensure a leak proof seal.

Clamps need to be tightened thoroughly using a 1/4" socket driver to achieve a leak proof seal. Brackets are available to convert old 240V lights. The pool level will need to be lowered and the bracket screwed to the pool wall. Ideally, a new cable should be pulled through the junction box.

Aqua Quip takes no responsibility for pool light conversions that are incorrectly or are connected to faulty cables or transformer.